

SEWERS

§ 141-39

§ 141-40

treatment facilities. While the term 'substantial removal' is not subject to precise definition, it generally contemplates removals in the order of eighty percent (80%) or greater. Minor incidental removals in the order of ten percent (10%) to thirty percent (30%) are not considered "substantial."

- C. Limitations on waste water strength in this Article of this chapter may be supplemented with more stringent limitations pursuant to Article IX:
- (1) If the Superintendent determines that the limitations in this Article may not be sufficient to protect the operation of the improvement's treatment works; or
 - (2) If the Superintendent determines that the limitations in this Article may not be sufficient to enable the improvement's treatment works to comply with water quality standards or effluent limitations specified in the improvement's national pollutant discharge elimination system (NPDES) permit.

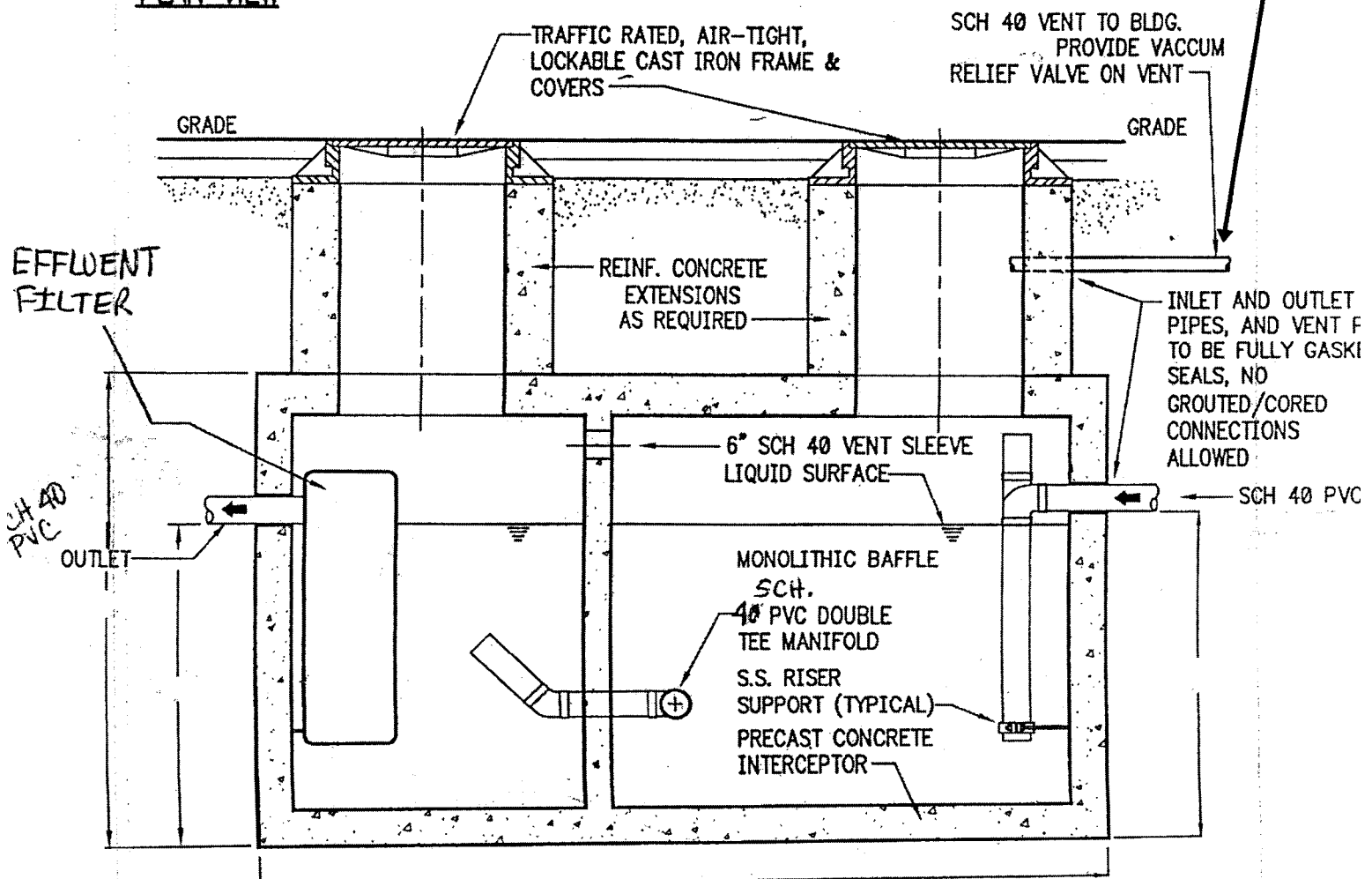
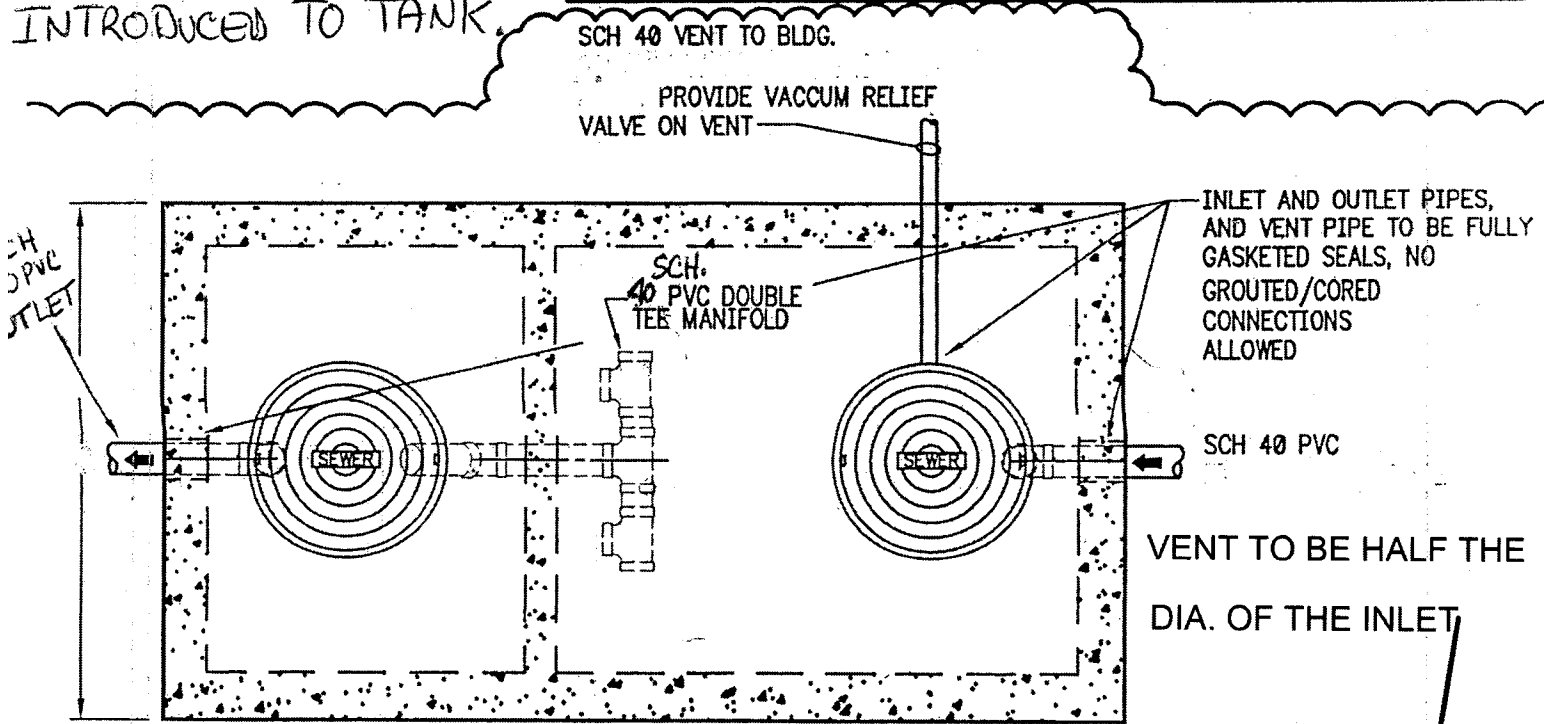
§ 141-40. Grease, oil and sand interceptors; grease tanks; grease traps. (15)

- A. Grease, oil and sand interceptors shall be provided when, in the opinion of the Superintendent, they are necessary for the proper handling of liquid wastes containing grease in excessive amounts, or other harmful ingredients. Interceptors shall not be required for private living quarters or dwelling units. All commercial kitchens and restaurants shall be required to install a grease tank with a minimum capacity of seventy hundred fifty (750) gallons. When, in the opinion of the Superintendent, existing interceptors are inadequate to handle the present volume of liquid waste, a grease tank with a minimum capacity of seven hundred fifty (750) gallons shall be installed. If conditions are such that a tank cannot be installed, an alternative means shall be met, at the discretion of the Superintendent. All interceptors shall be located as to be readily and easily accessible for cleaning and inspection. Grease and oil interceptors shall be constructed of impervious materials capable of withstanding abrupt and extreme changes in temperature. They shall be of substantial construction, watertight and equipped with easily removal covers which when in place shall be gastight and watertight.
- B. Grease tanks, when installed, should comply with DEC Publication, Division of Water, Design Standards for Wastewater Treatment Works, 1988.
- C. Food service facilities of any type will be fitted with separate grease traps of pre-cast concrete, minimum one thousand (1,000) gallons' capacity exterior to the structure, and accessible for inspection and pump-out. Any food service facility with a seating capacity in excess of one hundred fifty (150) seats shall be provided with a grease trap with minimum capacity of two thousand (2,000) gallons.

(15) Editor's Note: Amended at time of adoption of Code; see Ch. 1, General Provisions, Art. 1.

GREASE TANK : TYPICAL DESIGN

- 1) DIMENSIONS OF TANK WILL BE DETERMINED BASED ON SIZE OF TANK: EXAMPLE 1000, 1500, 2000, 2500 GALLON ETC.
- 2) EFFLUENT FILTER: SIZED, BASED ON TOTAL G.P.D OF WATER USAGE INTRODUCED TO TANK.





Call 800-633-4204 for information or help
For callers outside North America +1-336-629-4651



Thermaco Big-Dipper Home Trapzilla Evaluwell Parts Compliance Assistant FAQ Request a Quote Contact Us

Big Dipper

- Point Source Grease Removal
- Central Grease Removal
- Internal Strainer Basket Series
- Automatic Solids Transfer Series

Thermaco

- Big Dipper Grease Traps
- Trapzilla Grease Traps
- Evaluwell Sample Ports
- Solid Strainers
- Application Specific
- Replacement Parts

Big Dipper Grease Trap Recovery & Removal Products

The Thermaco, Inc. Big Dipper® Automatic Grease and Oils Removal System removes free-floating (non-emulsified) grease & oils from kitchen drain water flows. Grease buildup within a building's plumbing drainage system is a major cause of problems due to drain line blockages. These problems jeopardize normal operations as well as create health and safety hazards within the facility itself. Proper installation of a Big Dipper System can reduce or eliminate grease problems. Use of the Big Dipper assures minimization and/or elimination of costly sewer surcharges and fines through efficient separation and removal of free-floating grease & oils. In addition, the Big Dipper also helps reduce or eliminate pumping and disposal costs associated with conventional grease traps or interceptors. The recovered grease & oils are substantially water-free and are suitable for recycling by local rendering and/or biodiesel companies.

View by Installation Location

Point Source Grease Removal



Point Source Big Dipper units remove grease from a single fixture such as a three-compartment sink or pre-rinse station.

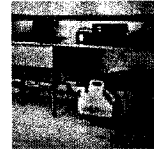
Central Grease Removal Selection



Central Big Dipper grease removal units remove grease in a central location such as institutional-type kitchens.

View by Solids Handling Method

Internal Strainer Basket Series



Big Dipper IS Series separate incidental food solids in a manually-emptied strainer basket.

Automatic Solids Transfer Series



Big Dipper AST Series units separate and automatically remove incidental food solids (less than 1" in diameter) from kitchen drain flows.



Call 800-633-4204 for information or help
For callers outside North America +1-336-629-4651

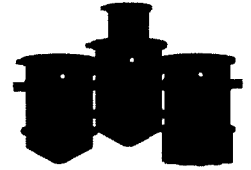


- [Thermaco Home](#)
- [About Us](#)
- [Big-Dipper](#)
- [Trapzilla](#)
- [Evaluwell](#)
- [Parts](#)
- [Compliance Assistant](#)
- [FAQ](#)
- [Request a Quote](#)
- [Contact Us](#)

Categories

- [Big Dipper Automatic Grease Traps->](#)
- [Trapzilla Grease Interceptors->](#)
- [Trapzilla Units->](#)
- [Trapzilla Grease Interceptors->](#)
- [In-Ground Trapzilla Interceptors](#)
- [Above-Ground Trapzilla Interceptors](#)
- [Basic Trapzilla Grease Interceptors](#)
- [Trapzilla Solids Separators->](#)
- [Trapzilla Options](#)
- [Evaluwell Sample Ports->](#)
- [Application Specific Options->](#)
- [Solids Strainers](#)

Trapzilla Grease Interceptors



[Click to Enlarge](#)



[In-Ground Trapzilla Interceptors](#)



[Above-Ground Trapzilla Interceptors](#)



[Basic Trapzilla Grease Interceptors](#)

Catalog Search:



[Advanced Search](#)

Ask



Innovations in Precast,
Drainage and Wastewater products

Polylok Inc.
3 Fairfield Blvd
Wallingford, CT 06492
Call Toll Free
888-761-9565
Email: polylok.com



PL-625 Effluent Filter

The PL-625 filter is ideal for grease trap applications. The 1/32" filtration has been shown to reduce fats, oils, and grease (FOG) by as much as 60% to 98%. The filter may be used in onsite wastewater systems that require a finer level of TSS removal. Whatever the application, Polylok has the filter for you!

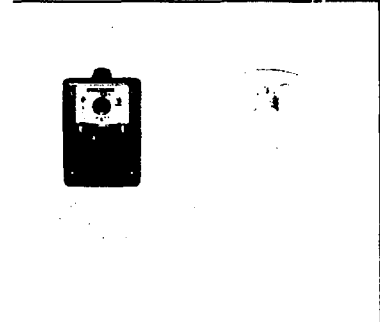
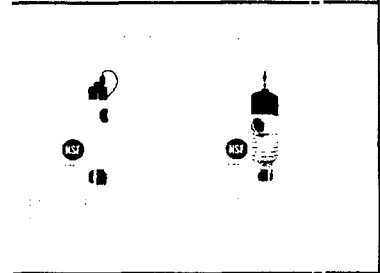
Search



Features

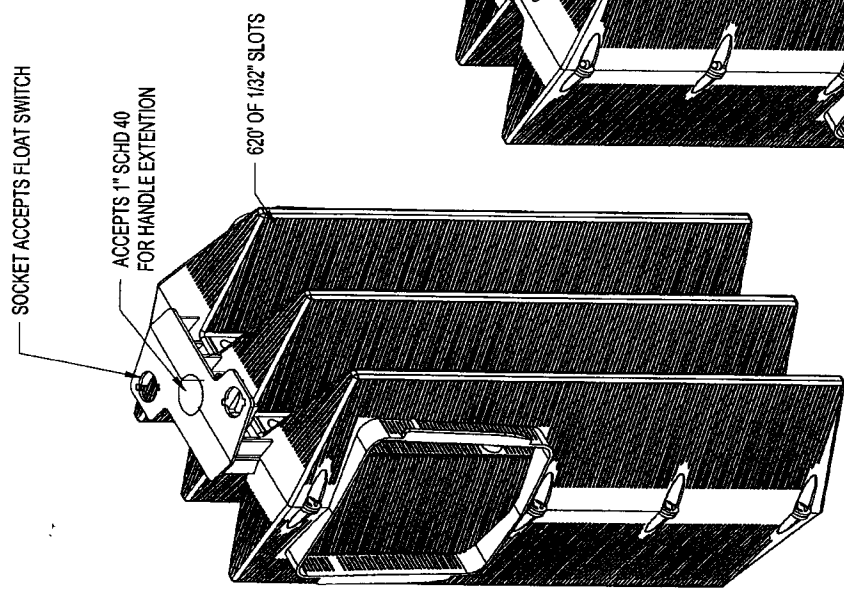
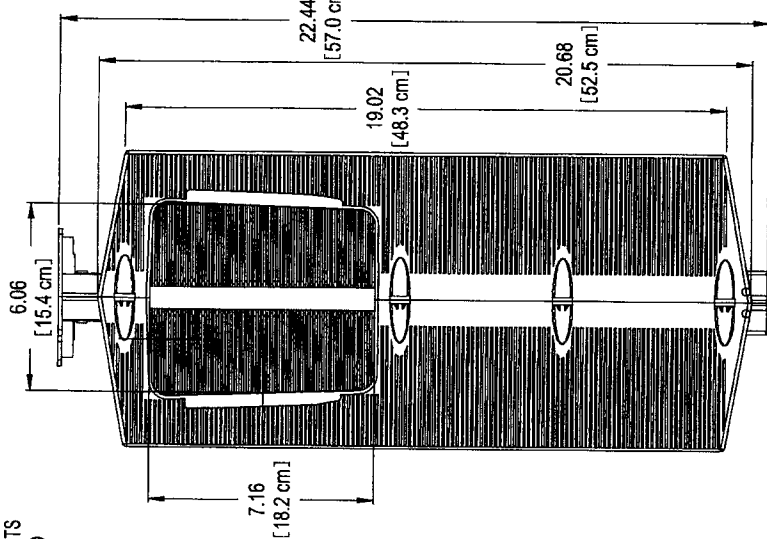
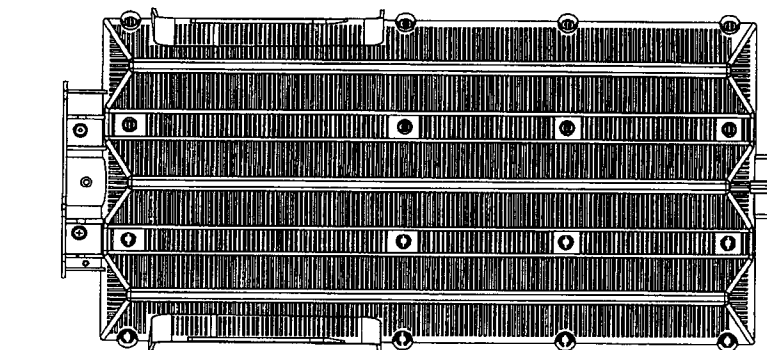
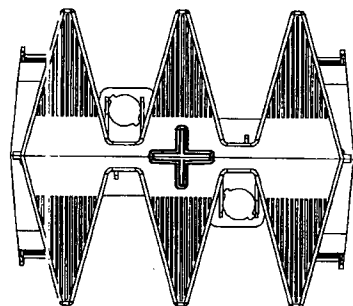
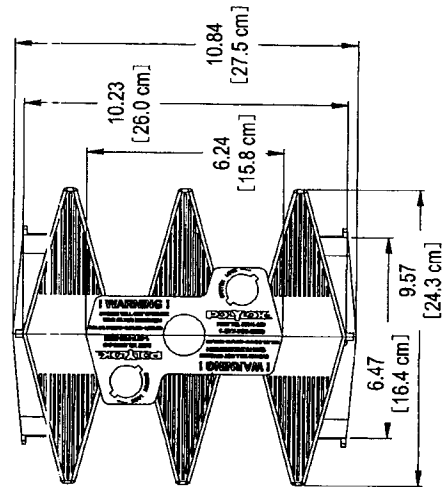
Features

- Rated for 8,000 GPD (gallons per day).
- 625 linear feet of 1/32" filtration.
- Accepts 4" and 6" SCHD 40 pipe.
- Built in gas deflector.
- Automatic shut-off ball when filter is removed.
- Alarm accessibility.
- Accepts PVC extension handle.



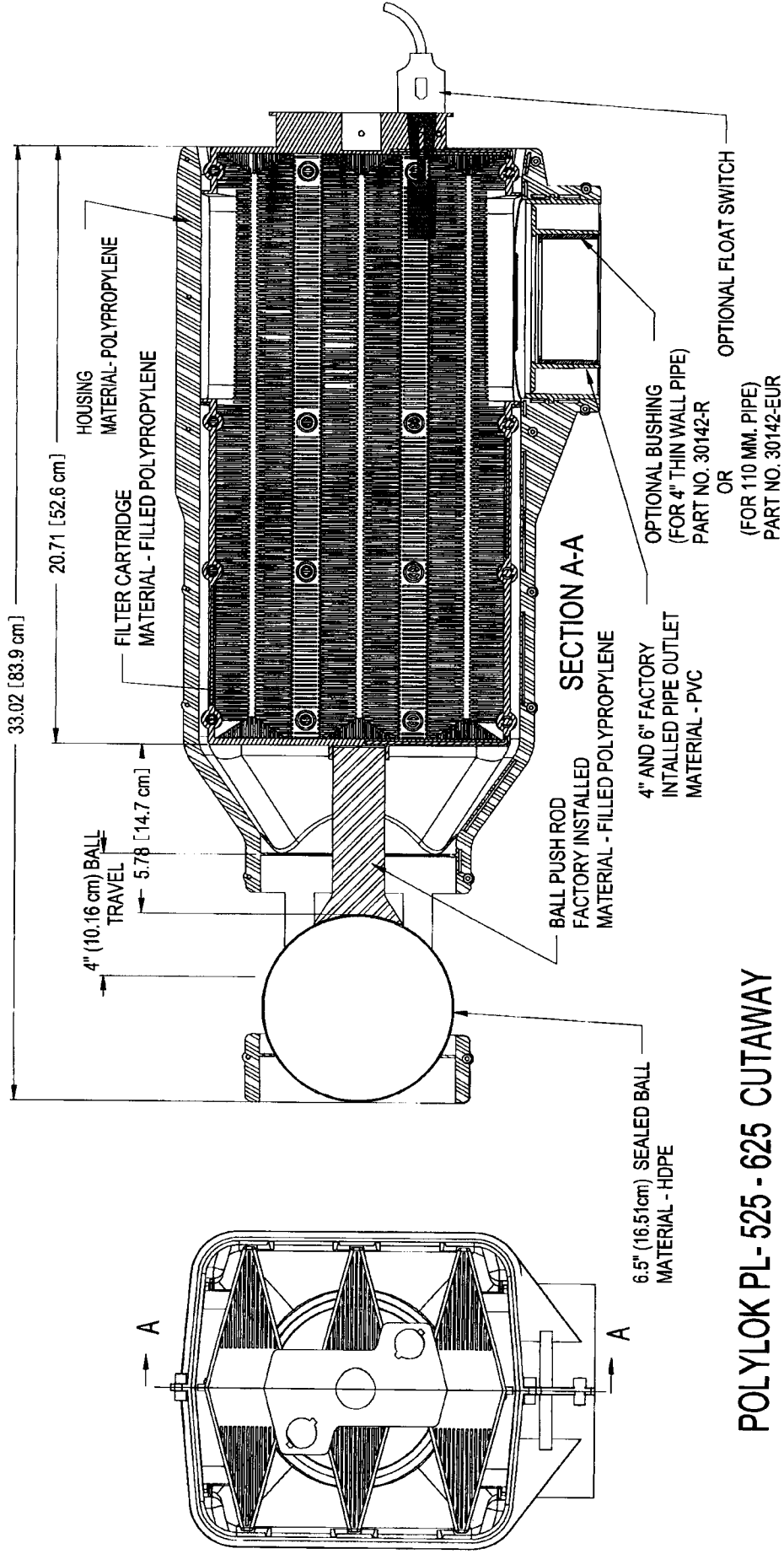
3 Fairfield Blvd Wallingford, CT 06492
Call Toll Free: 888-761-9565
Email: polylok.com

Powered by Ubercart

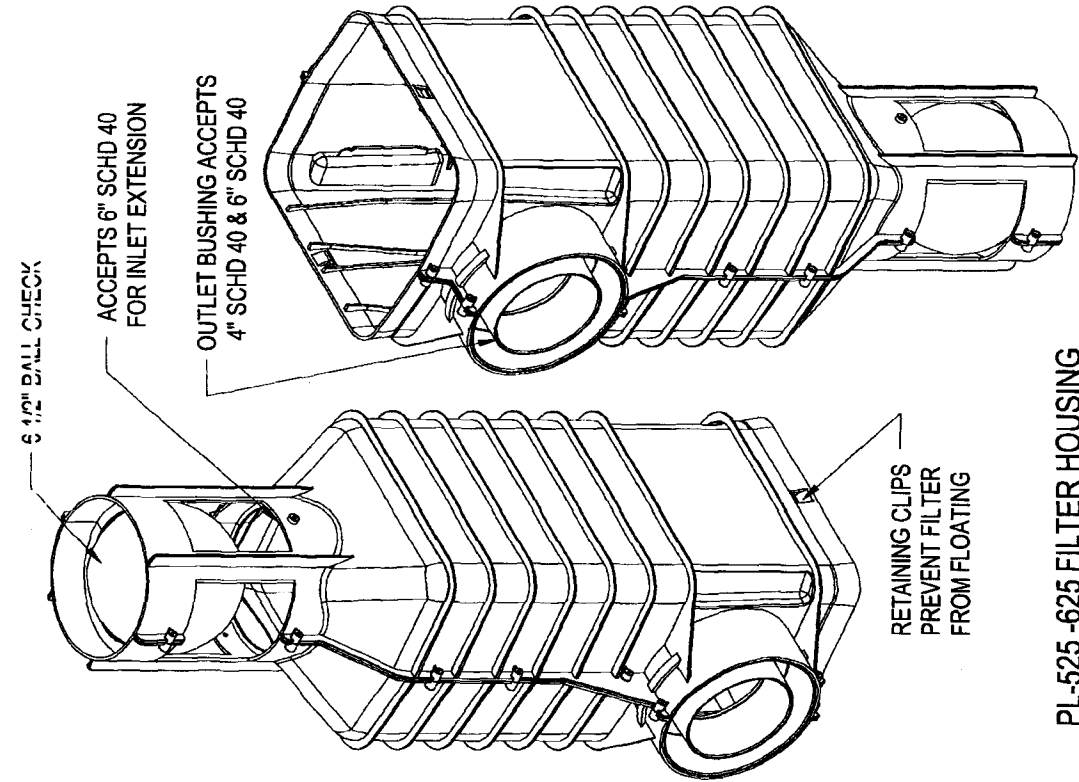
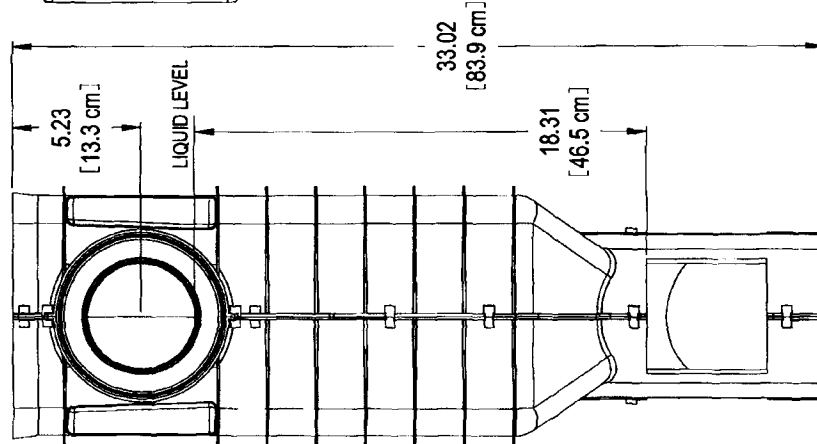
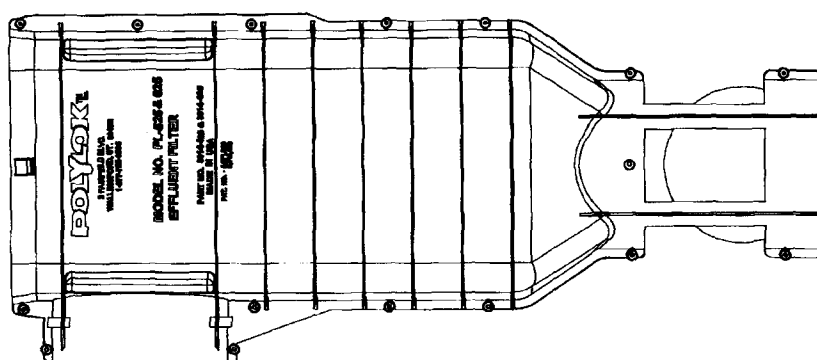
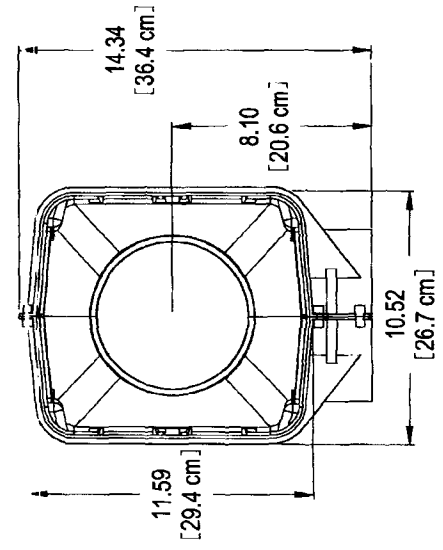
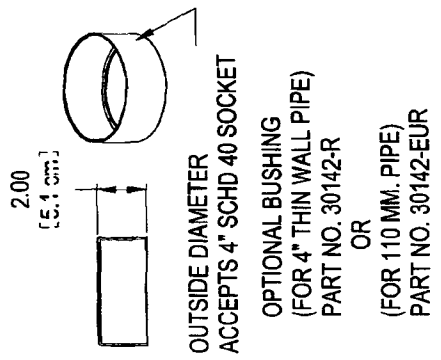


SOCKET ACCEPTS
BALL PUSH ROD

POLYLOK PL-625 FILTER CARTRIDGE
PART NO. - 30141-625
MATERIAL - POLYPROPYLENE
COLOR - GREEN
TOTAL FILTRATION - 620' OF 1/32" SLOTS (1.60 sq.ft. (189 METERS OF 8MM SLOTS)(1486.5 sq.cm)
TOTAL FILTER SURFACE - 9.58 SQ.FT. (8903.76 sq. cm)



POLYLOK PL-525 - 625 CUTAWAY



PL-525-625 FILTER HOUSING
PART NO. - 30142-525
MATERIAL -
HOUSING - POLYPROPYLENE
OUTLET BUSHING - PVC
6.5\"/>